

2016/17 Web-based Learning Courses for Gifted/More Able Students (offered by EDB and HKAGE)

網上資優課程 2016/17 (由教育局及香港資優教育學苑提供)

Step 1: Go to the HKAGE website > STUDENTS > Student Membership

(<http://www.hkage.org.hk/en/students/student-membership>).

There is a section introducing the “Self Nomination Scheme – Through Web-based Learning Courses for Gifted/More Able Students (offered by EDB and HKAGE)”.

第一步：登入資優學苑網頁 > 學生園地 > 學員資格

(<http://www.hkage.org.hk/b5/students/student-membership>)

此分頁將簡介「自身提名計劃—透過網上資優課程(由教育局及香港資優教育學苑提供)」。



Step 2: In the “Learning Opportunities” section, there is a link which brings you to the webpage of the

“Online Programmes” (<http://www.hkage.org.hk/en/student-programme/online>).

Students may participate in the Self Nomination programmes as a non-member.

第二步：於「學習機會」一欄內，按下「網上學習課程」的連結

(<http://www.hkage.org.hk/b5/student-programme/online>)。

學生可以非學員的身份報讀自身提名課程。



Step 3: Check out the “Secondary Programmes” or “Primary Programmes” sections and select the appropriate domain according to the below table. The web-based learning courses available for applications will be displayed. Students can only enroll in one of the following five web-based learning courses for Self Nomination intake.

第三步：瀏覽「中學課程」或「小學課程」，並根據下表選擇適當的學習範疇。版面會顯示可供報讀的網上課程，學生只能從以下五個網上課程中報讀一個，以參與自身提名計劃。

Domains 學習範疇	Web-based Learning Courses for Gifted/More Able Students 網上資優課程
Humanities 人文學科	Humanities Web-based Learning Course for Gifted/More Able Students – Economics (offered by EDB and HKAGE) 人文學科網上資優課程－經濟學（由教育局及香港資優教育學苑提供）
Mathematics 數學	Mathematics Web-based Learning Course for Gifted/More Able Students (offered by EDB and HKAGE) 數學網上資優課程（由教育局及香港資優教育學苑提供）
Sciences 科學	Sciences Web-based Learning Course for Gifted/More Able Students – Astronomy (offered by EDB and HKAGE) 科學網上資優課程－天文學（由教育局及香港資優教育學苑提供）
Sciences 科學	Sciences Web-based Learning Course for Gifted/More Able Students – Earth Science (offered by EDB and HKAGE) 科學網上學習課程－地球科學（由教育局及香港資優教育學苑提供）
Sciences 科學	Sciences Web-based Learning Course for Gifted/More Able Students – Palaeontology (offered by EDB and HKAGE) 科學網上資優課程－古生物學（由教育局及香港資優教育學苑提供）

Step 4: This table shows the following information of the web-based learning courses available for applications.

- Programme Date
- Programme Title (Course code)
- Programme Type / Level
- Target Participants
- Application Details
- Closing Date for Application

第四步： 這個圖表顯示以下可供報讀的網上課程資料

- 課程日期
- 課程名稱（課程編號）
- 課程種類 / 學習程度
- 培訓對象
- 報名詳情
- 截止日期

The screenshot shows a web-based learning course application interface. The left sidebar is titled 'For Students' and includes navigation options like 'Welcome Note', 'Student Membership', 'Learning Opportunities', 'Student Conference', 'Student Voice', 'Important Information', 'Update of Personal Particulars and Learning records', and 'Alumni Zone'. The main content area is titled 'Online Programme' and features a search section with fields for 'Keywords', 'Programme Type' (set to 'All'), 'Start Date', and 'Closing Date'. Below the search section, there are categories for 'Secondary Programmes' and 'Mathematics'. A table lists available courses with columns for 'Date', 'Programme Title (Course code)', 'Type / Level', 'Target Participants', 'Application details', and 'Closing Date'. The right sidebar is titled '學生園地' and includes navigation options like '歡迎辭', '學員資格', '學習機會', '學生會議', '學員心聲', '重要信息', '更新個人資料及學習紀錄', and '校友園地'. The main content area on the right is titled '網上學習課程' and includes a search section and a table of available courses with columns for '日期', '課程 (課程編號)', '種類/學習程度', '培訓對象', '報名詳情', and '截止日期'.

Date	Programme Title (Course code)	Type / Level	Target Participants	Application details	Closing Date
2 Apr to 20 Aug 2016	Secondary Maths Online Learning Programme for Screening (Secondary Preliminary Members) (MATO3910)	Introductory Course	S1 to S6 HKAGE Preliminary Student Members in Mathematics Domain	Information Online Application	20 August 2016

Step 5: Locate the web-based learning course that you would like to apply for. Details of the programme can be found by clicking “Information” under “Application Details”.

第五步： 找出你想報讀的網上課程，課程詳情可參閱「報名詳情」的「資料」一欄。

Step 6: Click “Online Application” under “Application Details” to apply for the programme. Fill in the Online Application Form with the following information and click the “Submit” button to complete the application:

- Chinese Name, English Name, HKID Number, Gender, School Name, Class Level, Email Address, Telephone Number, Date of Birth, Postal Address of the Student
- Names and Contact Information of Parents, Emergency contact information

第六步：點選「報名詳情」的「網上報名」報讀課程。於網上報名平台填寫以下資料，填妥後按「遞交」完成申請：

- 中文姓名、英文姓名、身分證號碼、性別、班級、學校名稱、電郵地址、電話號碼、出生日期及郵寄地址
- 家長的姓名及聯絡資料、家長／監護人緊急聯絡資料

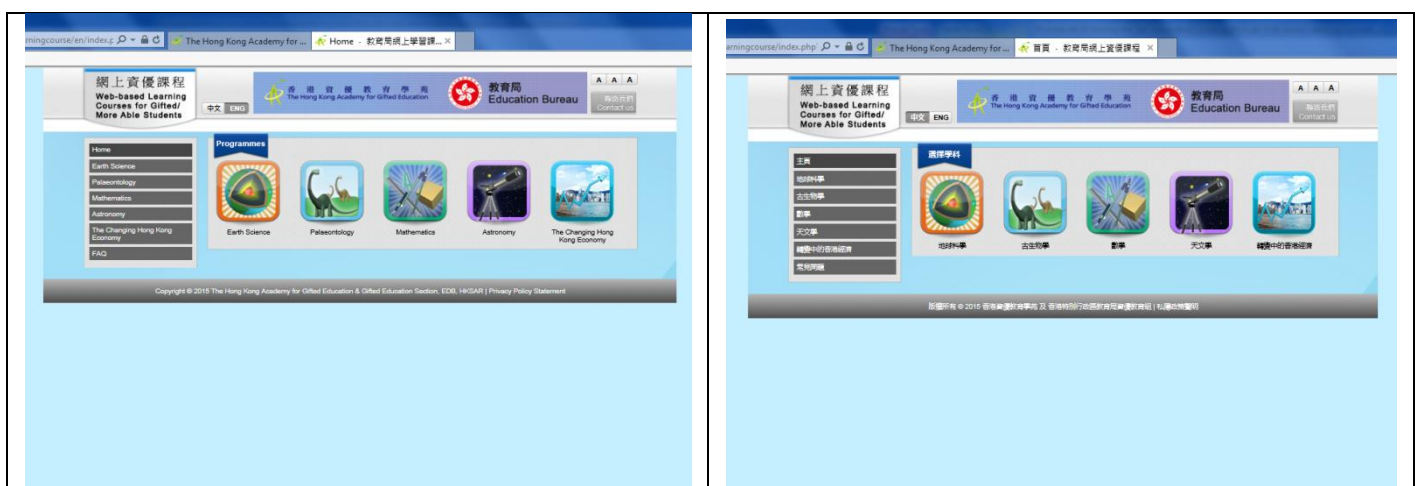
課程資料 PROGRAMME INFORMATION	
課程名稱: Programme Title:	座標幾何 II Coordinate Geometry II
活動編號: Programme Code:	MATO3322
時數: Duration:	18 小時 18 hours <small>*備註：並於2016年10月1日前完成此課程，亦需於網上測驗中合格，方可完成此課程。 *Remark: You must complete this course before 1 October 2016. You have to pass the online test in order to complete the course.</small>
課程語言: Programme Language:	英文 English
個人資料 PERSONAL INFORMATION	
中文姓名: Chinese Name:	測試用戶
英文姓名: English Name:	Testing User

You will receive an onscreen and an email confirmation for your application with the login name and password to the “Online Learning Platform”.

遞交表格後會即時顯示報名確認通知，隨後你亦會收到電郵附上登入網上學習平台的名稱及密碼，以示確認。

Step 7: Access the “Online Learning Platform” to start the web-based learning course.

第七步：登入網上學習平台，開始網上學習課程。



Step 8: The HKAGE will retrieve the results of the web-based learning courses in every quarter, and invite students who got a pass in level 3 of the web-based learning courses to submit their profiles for Self Nomination. Nominations have to be submitted online and eligible students will be given the access to the “Online Nomination Platform” via email notification.

第八步：資優學苑每三個月便會收集網上課程的成績，並邀請於網上課程取得第 3 級成績的學生呈交其個人檔案，作自身提名之用。自身提名必須透過網上平台遞交申請，登入網上提名平台的帳戶及密碼將會透過電郵發放。

Step 9: Students will be informed of the nomination results within a month. Students admitted will become a preliminary member of the HKAGE. In order to obtain full membership, students are required to meet the related programme completion requirements within the first Student Learning Profile (SLP) review period. The review period runs from 1 September each year to 31 August of the following year. Student members who join the HKAGE during the review period must fulfill the yearly requirement within the period from the date of admission to the end of the review period of the subsequent year.

第九步：學生將於一個月內接獲提名結果，獲取錄的學生將成為資優學苑的初步學員。初步學員必須於首個學生學習概覽查核期間達到有關課程的要求，方可成為正式學員。查核期為每年 9 月 1 日至下一年 8 月 31 日。於查核期間獲資優學苑取錄的學員，須於取錄日期至下一年查核期完結前達到年度要求。

In addition to the above-mentioned requirement, primary student members are required to successfully complete the common-core programme “Let Us Shine!” under the “Personal Growth and Social Development” category during their studies in primary schools for confirmation of their secondary student membership. Please refer to the HKAGE website for more details of the membership requirement:

<http://www.hkage.org.hk/en/students/student-membership>.

除上述要求外，獲取錄的小學學員須於就讀小學期間完成「個人成長及社交發展」類別內的小學共同核心課程「Let Us Shine!」，其中學學員資格方會獲得確認。請參閱資優學苑網頁了解更多有關學員資格的詳情：

<http://www.hkage.org.hk/b5/students/student-membership>